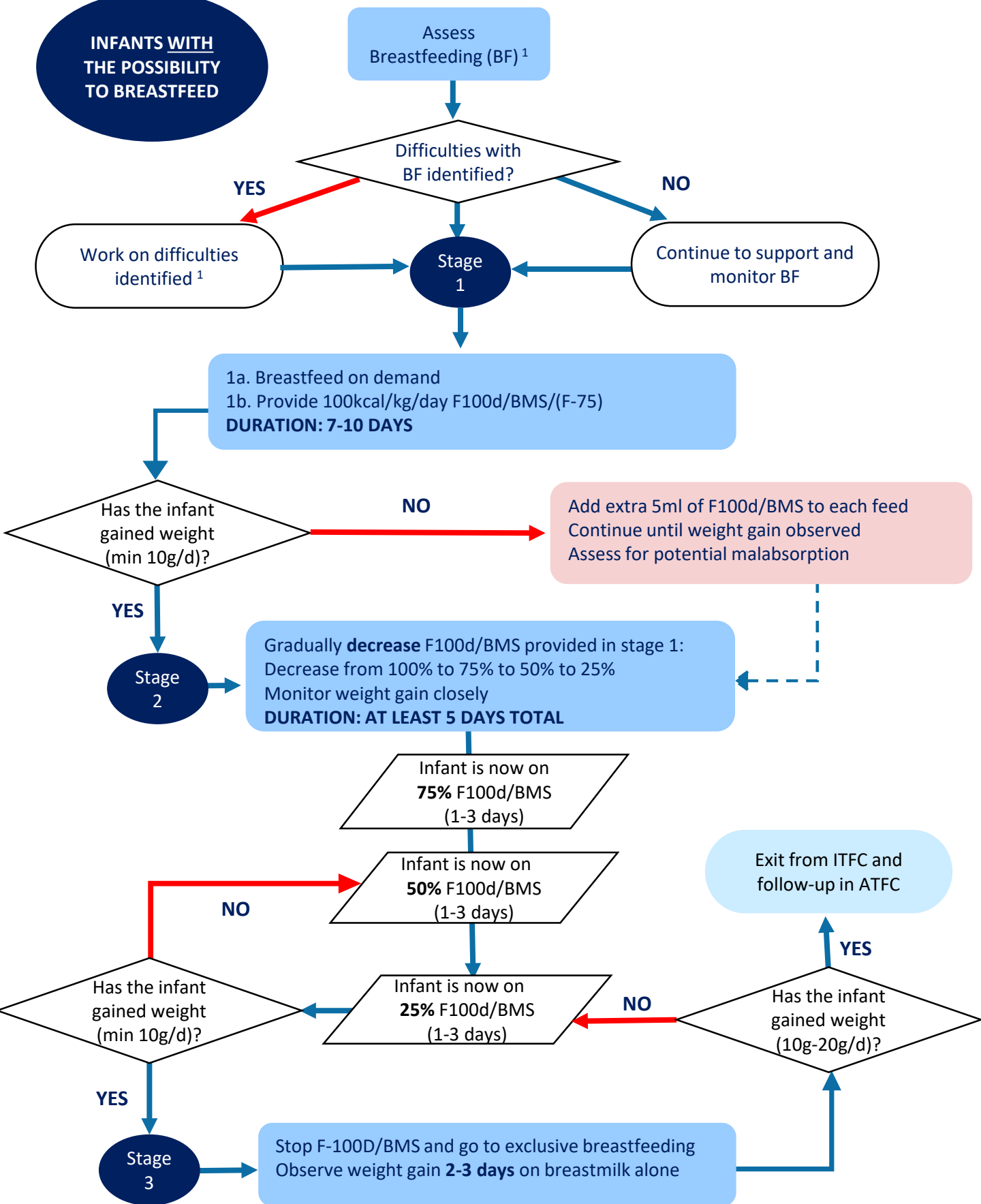


**INFANTS WITH THE POSSIBILITY TO BREASTFEED**



<sup>1</sup>Use resources from the [MSF Breastfeeding Toolkit](#). BMS = Breastmilk Substitute (infant formula). F-100d = F-100 diluted

**INFANTS WITHOUT THE POSSIBILITY TO BREASTFEED**

Assessment made of NO possibility for infant to be breastfed

YES

Stage 1

**100kcal/kg/day BMS/F-100 diluted**  
 Infant with oedema: BMS or F-75  
**8-12 feeds per day**  
**DURATION: 5-7 days**

Appetite returned?  
 Oedema resolving?

NO

Clinical review for any new (or missed on initial assessment) medical conditions which could explain lack of appetite/persistence of oedema (e.g. HIV test, TB screening, etc)

YES

Stage 2

**110-130kcal/kg/day BMS/F-100 diluted**  
 Infant with oedema: BMS or F-75  
**8-12 feeds per day**  
**DURATION: 2-3 days**

Clinical review for any new medical conditions which could explain lack of appetite/intolerance Consider changing milks

No signs of feed intolerance?  
 Taking at least 90% of milk?  
 No oedema?  
 Min stay of 2 days in stage 2?

NO

YES

Stage 3

**150kcal/kg/day BMS**  
**8-12 feeds per day**  
**DURATION: 2-3 days**

Clinical review for any new medical conditions which could explain lack of weight gain

15% weight gain (from adm)\* for min 3 days?  
 No bilateral pitting oedema?  
 Clinically well and alert?  
 Caretaker ready and prepared to go home?

NO

YES

Exit from ITFC and follow-up in ATFC

\*Or weight when oedema resolved.

BMS = Breastmilk Substitute (infant formula). F-100d = F-100 diluted