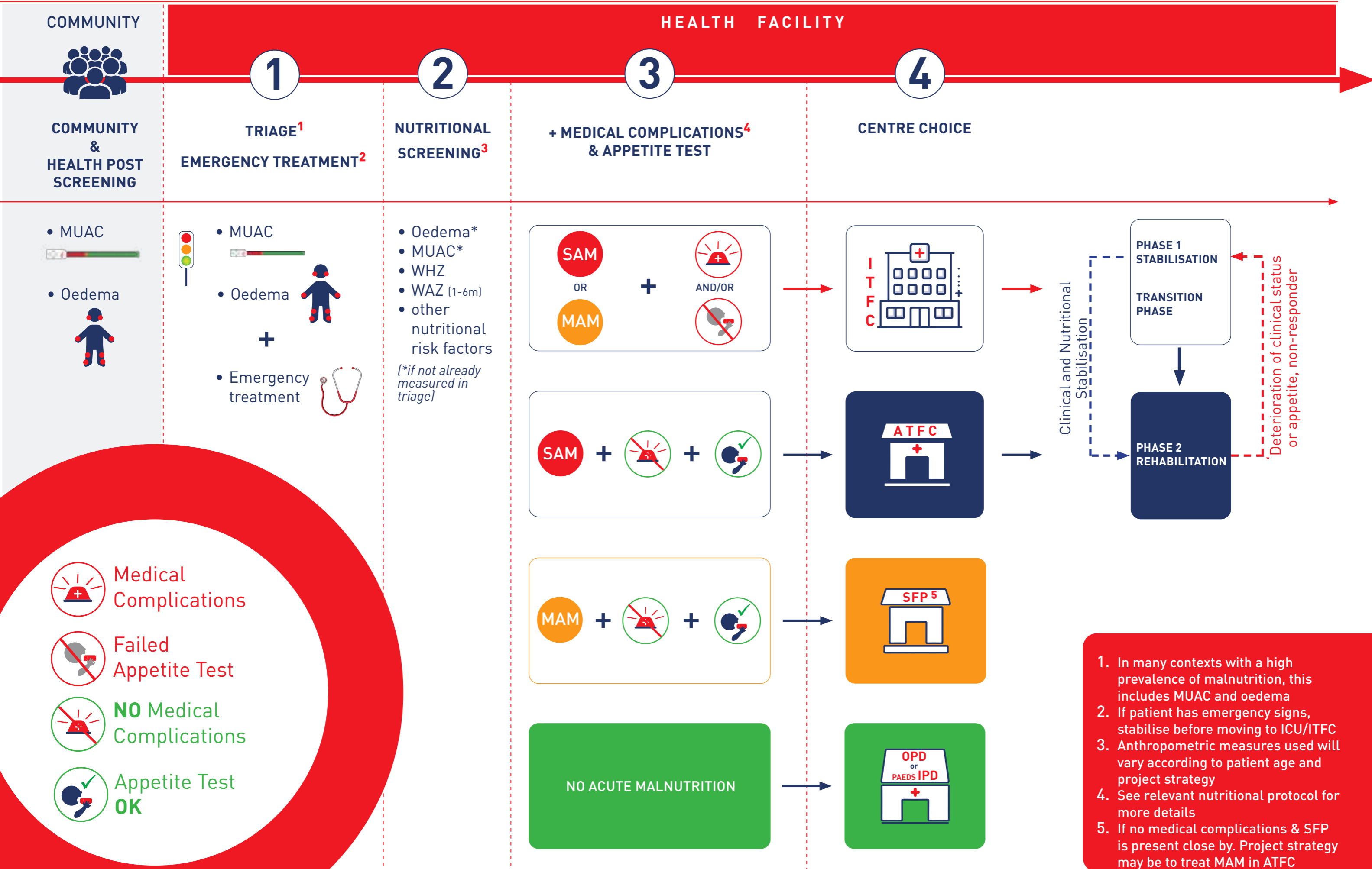


PATIENT FLOW IN A MSF NUTRITIONAL PROGRAMME



- Medical Complications
- Failed Appetite Test
- NO** Medical Complications
- Appetite Test **OK**

1. In many contexts with a high prevalence of malnutrition, this includes MUAC and oedema
2. If patient has emergency signs, stabilise before moving to ICU/ITFC
3. Anthropometric measures used will vary according to patient age and project strategy
4. See relevant nutritional protocol for more details
5. If no medical complications & SFP is present close by. Project strategy may be to treat MAM in ATFC